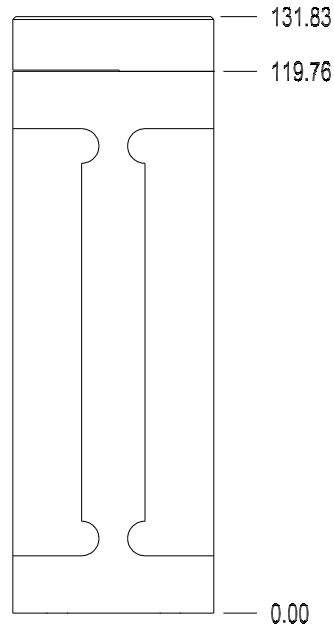
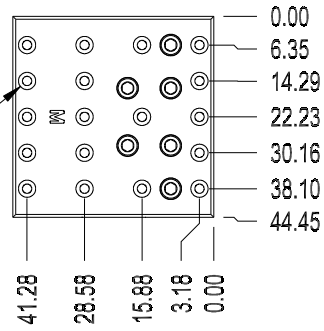


PKG Start Date

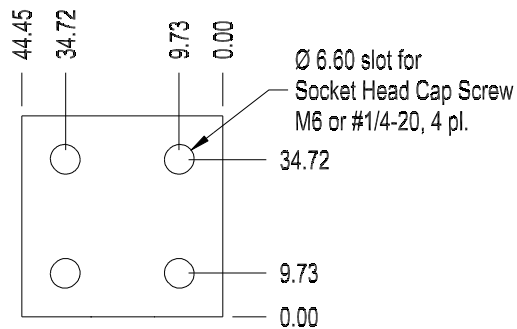
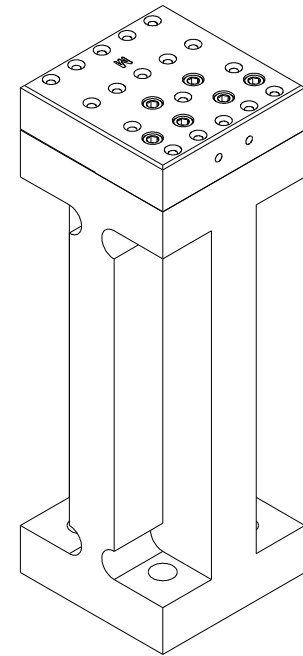
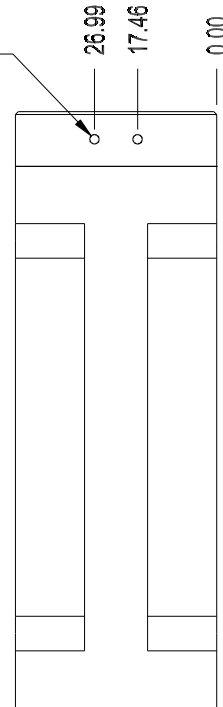
REV Date

APPROVED

M2.5 x 0.45 tapped holes,  
6.0 dp., 18 pl.



M2.5 x 0.45  
tapped holes,  
5.0 dp., 2 pl.



PST002-SI Post (6-Axis equivalent)

Material: \_\_\_\_\_  
 Finish: \_\_\_\_\_ Tolerance: \_\_\_\_\_

SIZE A	VIEW:	DWG NO. PT025517A	REV A
SCALE 0.6	FILE	PT025517A.ckd	SHEET 1/1